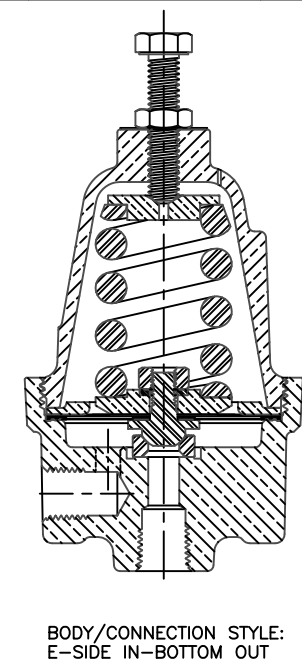
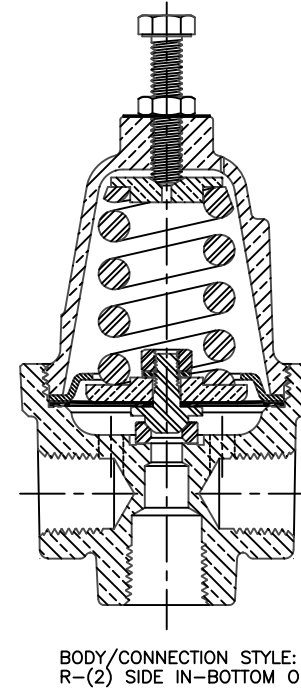
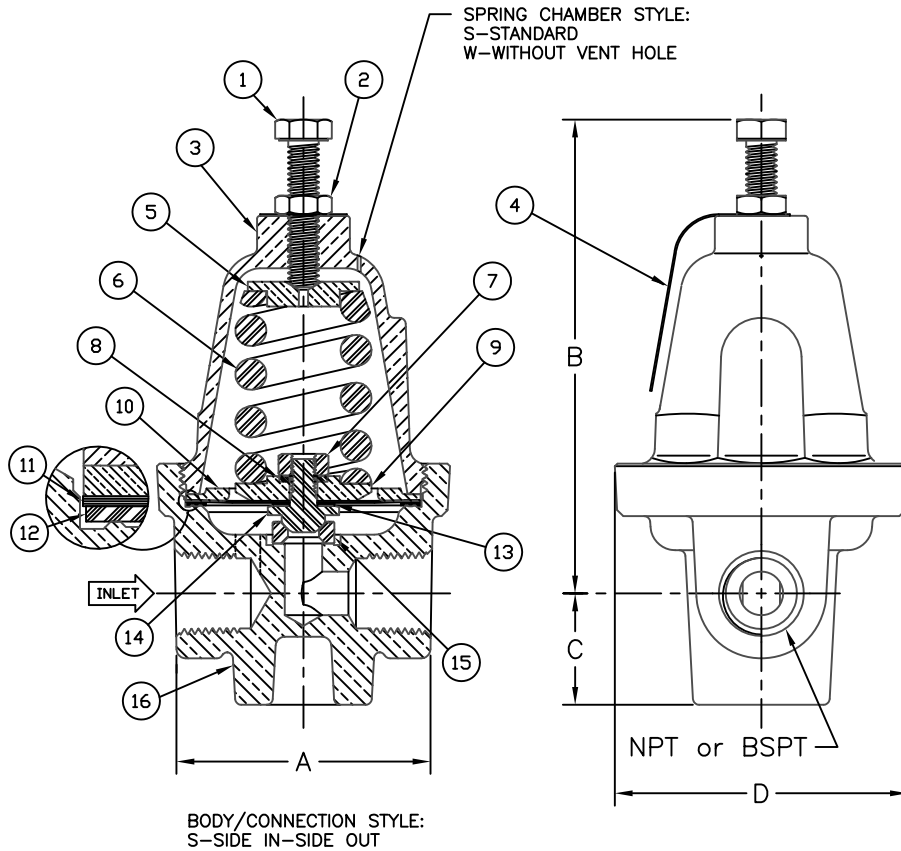


SIZING CHART

VALVE SIZE	A	B	C	D
1/4	2.44 [62.0]	4.45 [113.0]	0.78 [19.8]	2.81 [71.4]
3/8	2.44 [62.0]	4.69 [119.1]	0.78 [19.8]	2.81 [71.4]
1/2	2.56 [65.0]	4.79 [121.7]	1.13 [28.7]	2.96 [75.2]


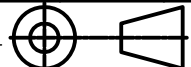
LIST OF MATERIALS

ITEM	QTY	DESCRIPTION	MATERIAL
1	1	ADJUSTING SCREW	SST
2	1	LOCK NUT	SST
3	1	SPRING CHAMBER	BRONZE, SST
4	1	NAME PLATE	ALUMINUM
5	1	SPRING BUTTON	BRASS
6	1	PRESSURE SPRING	SST
7	1	NUT	SST
8	1	WASHER	SST
9	1	PRESSURE PLATE	BRASS
10	1	DIAPHRAGM STOP	BRASS
11	4	DIAPHRAGM	BRONZE, SST
12	1	GASKET	TEFLON
13	1	GASKET	TEFLON
14	1	BALL SEAT	SST
15	1	SEAT RING	SST
16	1	BODY	BRONZE, SST



- 2. CLEAN FOR CRYOGENIC SERVICE.
- 1. DIMENSIONS ARE APPROXIMATE.

NOTES: UNLESS OTHERWISE SPECIFIED.

CUSTOMER:	DWN	JSH	11-09-15	 CASH VALVE			
ORDER NO.:	CHK	MDF	11-09-15				
CATALOG NO.:	ENG						
SERIAL NO.:	MFG						
TAG NO.:	APPR						
SET PRESSURE:	APPR						
TITLE BACK PRESSURE VALVE CRYOGENIC							
DCO LOCATION/CODE	ABM			SIZE	DWG. NO.	REV.	
DDO LOCATION/CODE	BMTN			C	CA-FRM2C	A	
PROJECTION				DO NOT SCALE PRINT	SCALE:	SHEET	1 OF 1

A	INITIAL RELEASE.	JSH/MDF 11-09-15
REVISION		
REV	ZONE	DESCRIPTION
		APPROVALS / DATE